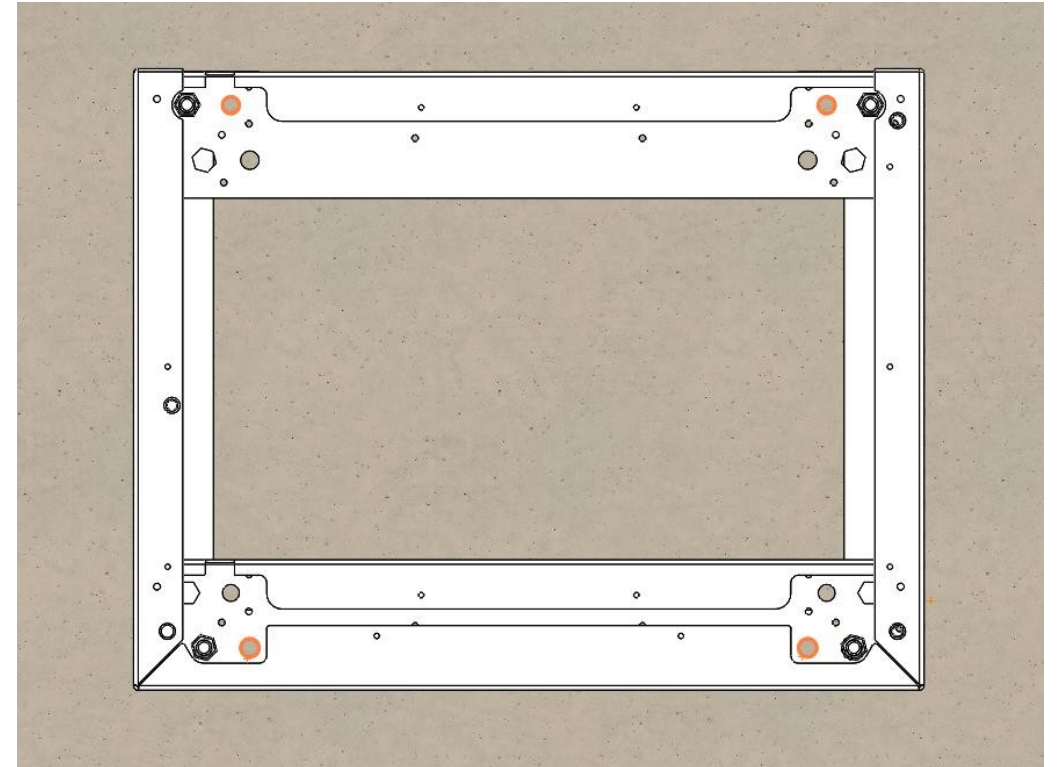
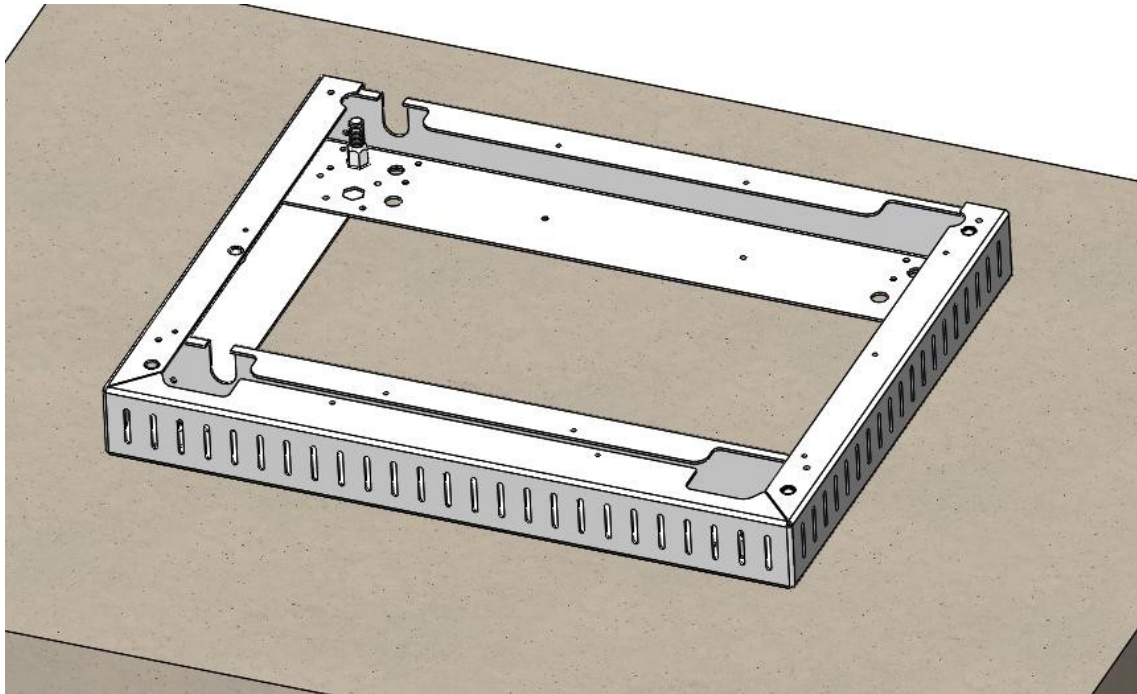


Instructions for CBAT4 and CBAT8

CBAT: Ground Mount

Position the floor base on the ground as needed and use the 4 colored holes as shown in the image below.

See the next page for dimensions.



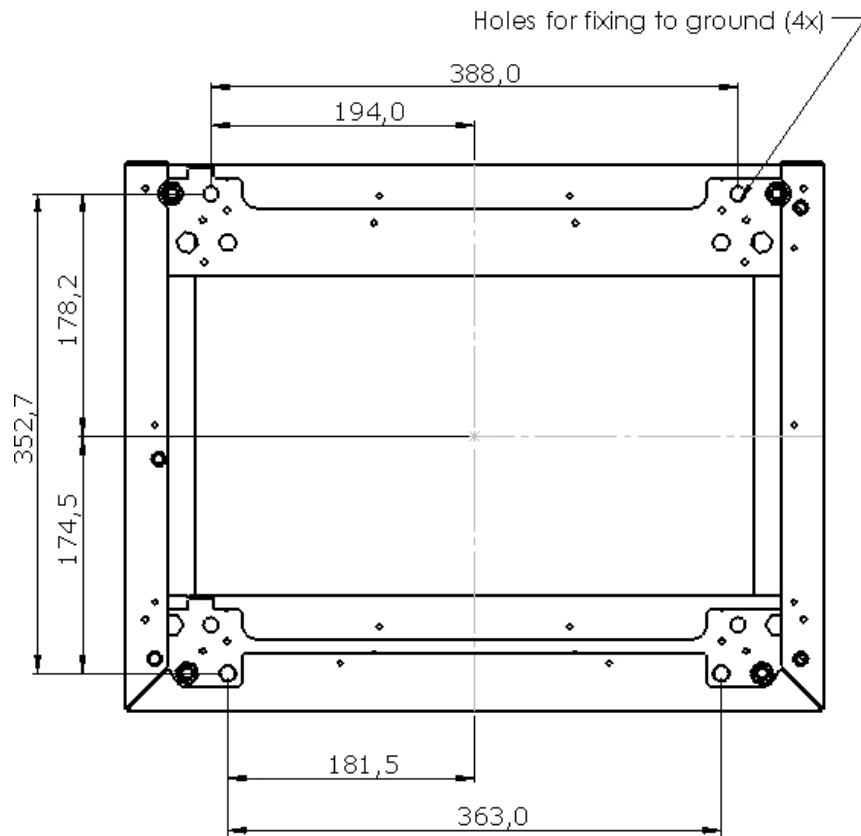
CBAT: Ground Mount

See CC dimensions as shown in the image on the left.

NOTE! CC 363.0 is the front of the cabinet!

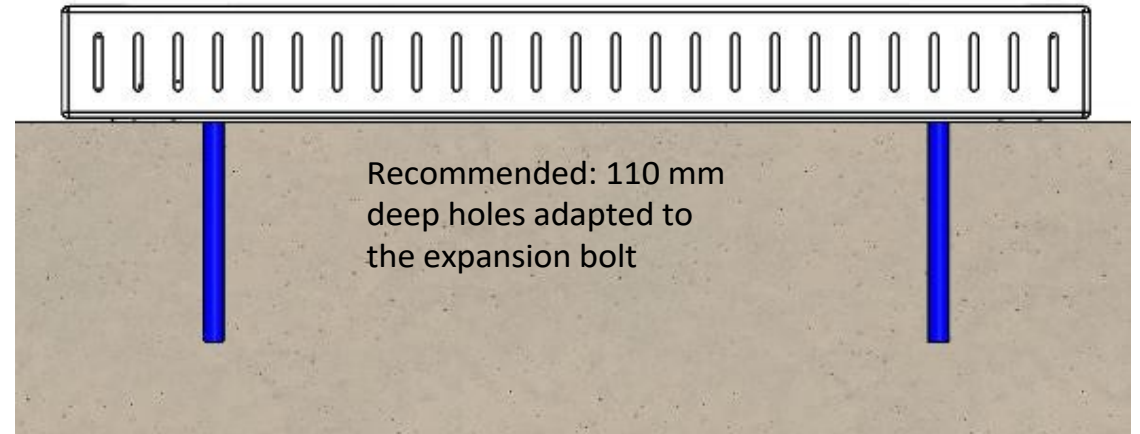
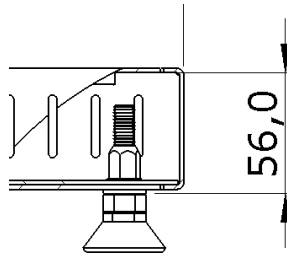
Drill 4 \varnothing 10mm holes as shown in the drawing, with a minimum depth of 110mm to counteract wind and vibration forces, among other things.

Secure the cabinet with expansion bolts. If the hole is 110 mm, use M10/52/149



NOTE!

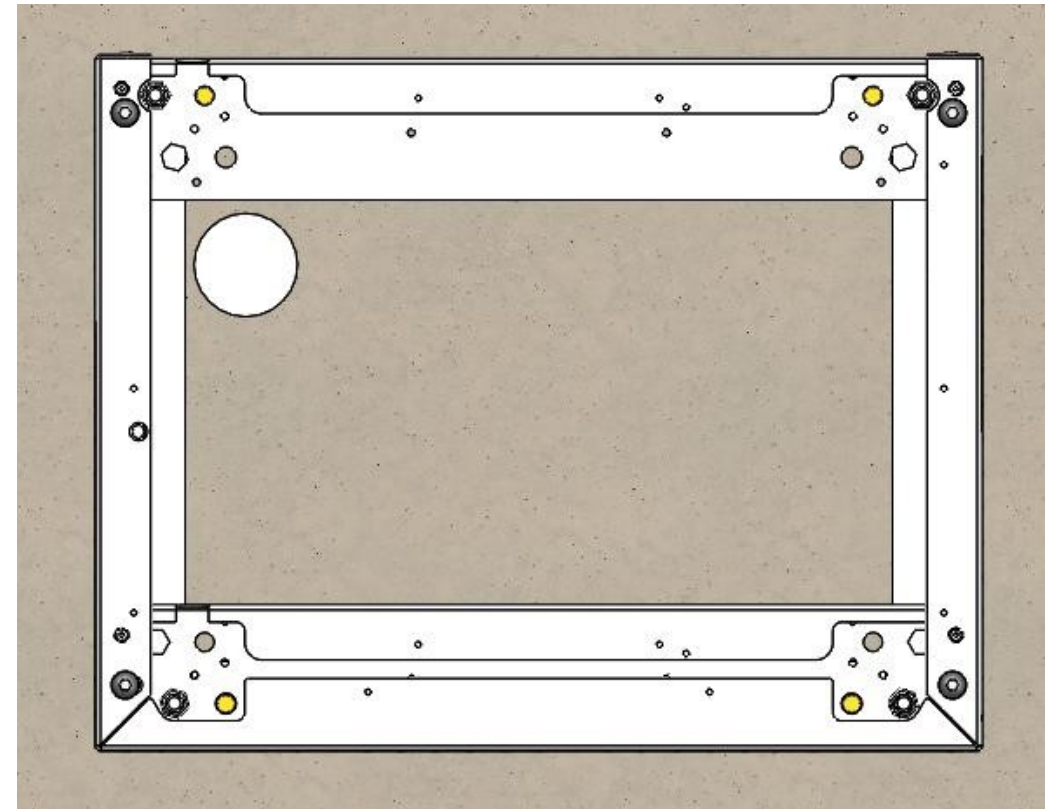
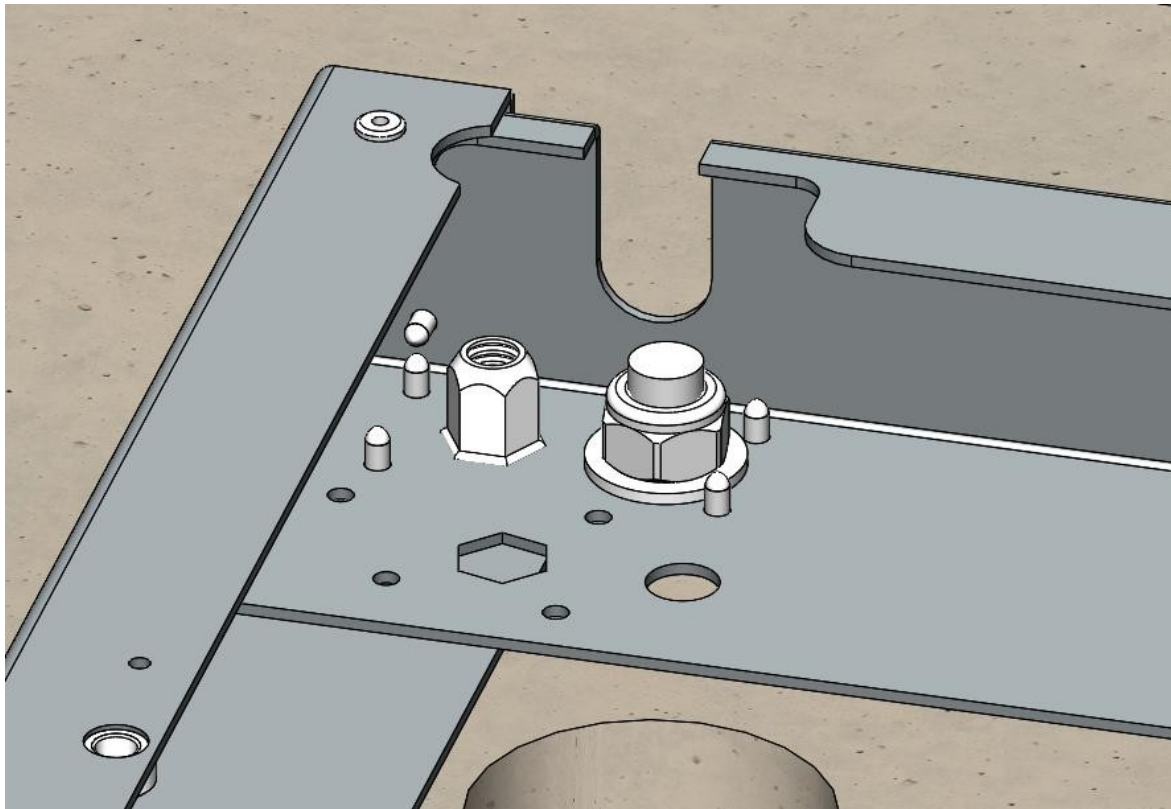
The expansion bolt must not protrude beyond the specified dimension below!



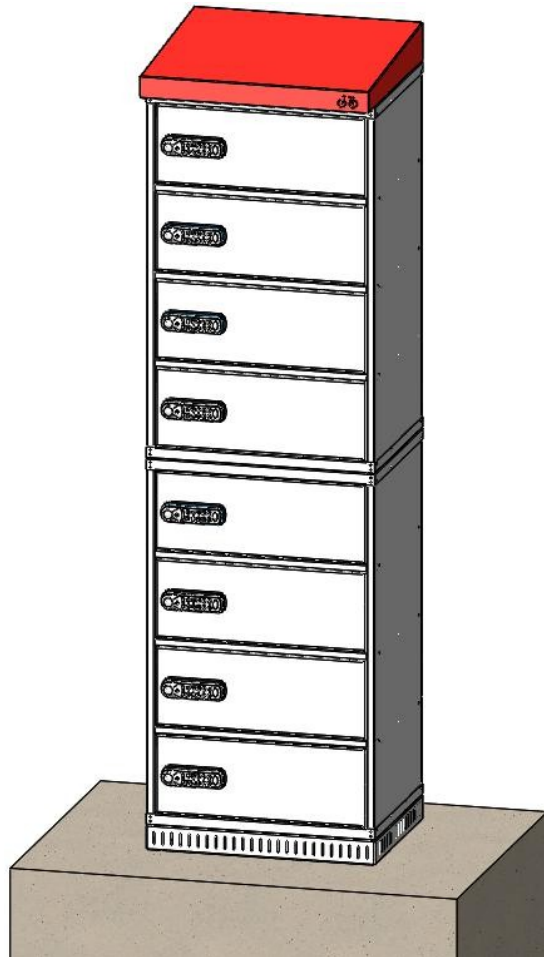
CBAT: Mounting in Concrete Foundation

The foundation has pre-drilled holes with threaded sleeves. Use the included M12 threaded rods and screw them into the 4 marked holes as shown in the image below on the right.

Use washers and lock nuts to secure the cabinet in place. See the image on the left.

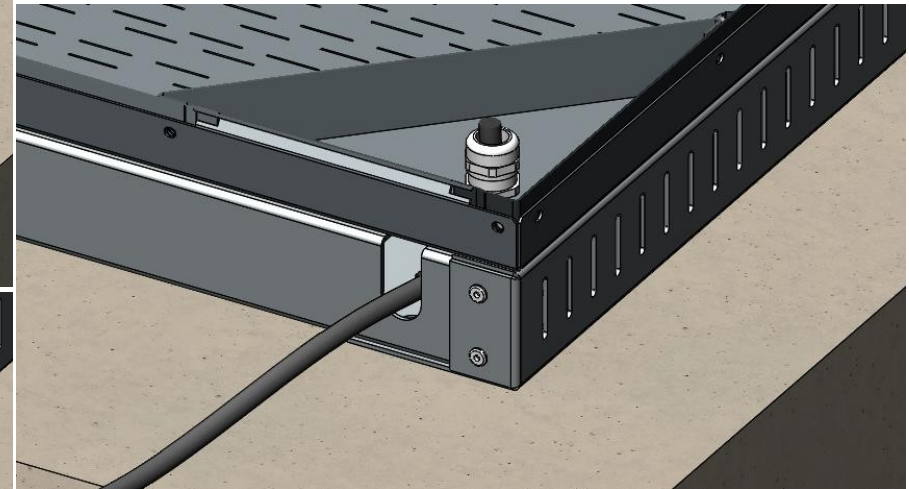
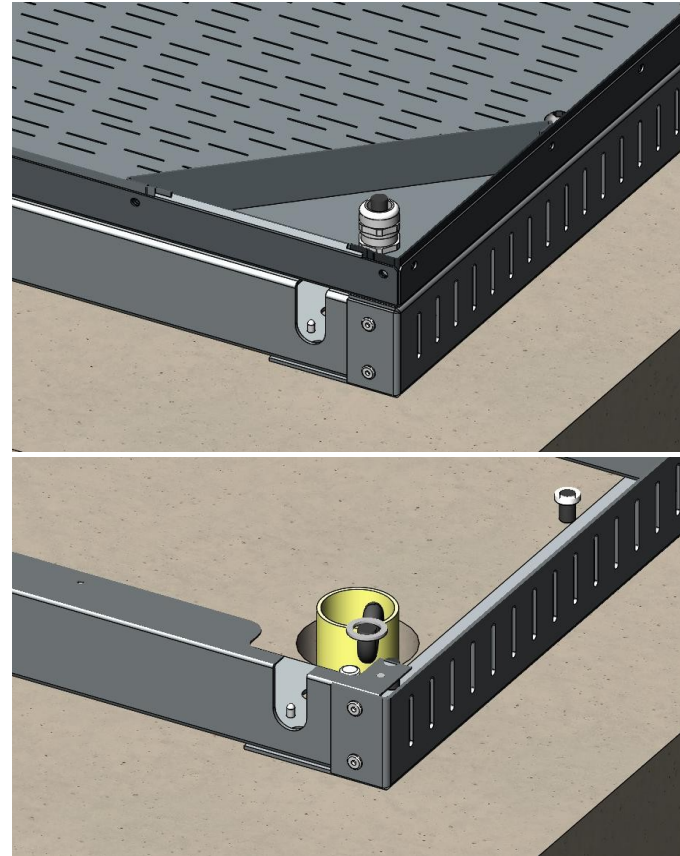


CBAT: Cabinet in Floor Base



When installing the cabinet, if a power cable is attached, it can be routed into the U-channel or the opening in the foundation.

Ensure that the cable does not get pinched before screwing it in place.



CBAT: Cabinet in the Floor Base

The cabinet is secured to the floor base with 4 M8 screws. All work is performed inside the bottom door.

